



Who we are

G Map is one of the leading Limited Liability Company in Sultanate of Oman with well trained, experienced engineers / surveyors / technicians and experts with latest and highly sophisticated equipment such as 3D laser Scanners, Ground Penetrating Radars (GPR), Drones, DGPS and Pulse Total stations to meet with any type of intricate survey works to comply with the needs and requirements at very reasonable and affordable budget to the total satisfaction of the customer.

With over two decades of experience & 2000+ trusted clients, G Map has built a strong reputation for delivering premier survey services, particularly recognized by government ministries, oil & gas divisions and various sectors for our unparalleled data accuracy and quality.

Our highly trained team, expertised in innovative technology, ensures meticulous attention to detail and guarantees data safety and retrieval.

We are client-centric, offering tailored solutions and remaining accessible to resolve any challenges with our core expertise. Continuously innovating to meet the evolving needs of our clients, we maintain strict confidentiality in all our projects, safeguarding our clients' information and reinforcing our commitment to excellence.

We are more than a survey company; we are committed to be partners in our clients' success. By addressing pain points and creating expert solutions, we make the complex simple and precise, ensuring that our clients can confidently make informed decisions and achieve their project goals with the highest level of accuracy and efficiency.





Vision

Creating a Standard of Excellence and Client Happiness in Innovative Surveying Solutions.

We envision creating a standard of excellence and client happiness in innovative surveying solutions. By leveraging cutting-edge technology, a specialized team, and a client-centric approach, GMap aims to achieve the highest levels of accuracy and efficiency.

The company's commitment to expanding its reach across the middle east and Africa ensures that more clients benefit from its innovative and reliable solutions.



Mission

At GMap, our mission is to revolutionize geospatial and engineering solutions with cutting-edge technology and a team of specialists, delivering unparalleled accuracy, reliability, and outstanding customer happiness.

Purpose Statement

Empowering clients with precise, innovative geospatial solutions to drive infrastructure excellence.

U M d P

What We Do

As an engineering consultancy specializing in geospatial surveys. We combine advanced surveying technologies with expert engineering insights to provide accurate data and analysis that support informed decision-making. Our team of qualified surveyors and engineers partners with clients across construction, infrastructure, oil & gas sectors and environmental sectors, ensuring reliable results that meet the highest industry standards and project requirements.

LAND SURVEY

ENGINEERING STUDIES

GPR SURVEY

OFFSHORE SURVEY SERVICES

ENGINEERING SURVEY

MAPPING & SURVEY

DESIGN SERVICE

GIS & REMOTE SENSING



10,000+

Projects in Oman



2,000+

Satisfied Clients



10,000+
K.M

Road Survey Projects



10,000+

Flying Hours
600+ Drone Survey



200+

GPR Survey Projects



350+

Hydrography Projects

Our Service Excellence

Mobile LiDAR Scanning

We provide accurate and efficient mobile mapping services using vehicle-mounted sensors. This technology delivers precise spatial data for a range of applications, including rapid utility corridor surveys, infrastructure planning, and asset management.

Advantages

- Quick Mobilization & Data collection
- Data collection in lively traffic state
- 2mm Laser precision
- 360 degree panoramic images
- Reduced manpower at site
- Cloud published data access



Model:
Trimble MX50

Model:
Trimble MX50





A few from our **Major Mobile LiDAR Scanning Projects**

Wadi Al Maawal Road Network Survey

Project Scope:

- ↕ 20 km total length
- 🌒 79 roads coverage
- 📍 Location: Wadi Al Maawal

Key Deliverables:

- Detailed topographic survey
- Road design documentation
- Digital terrain modeling

Niswa-Bahla Road Dualization

Project Scope:

- 🌒 Major highway dualization
- 📍 Location: Niswa-Bahla
- 🚧 Full corridor survey

Key Deliverables:

- Topographic survey data
- Dualization design support
- Infrastructure mapping

Mudhaibi Road Network Survey

Project Scope:

- ↕ 29 km total length
- 📍 Location: Mudhaibi
- 🌙 Multiple road networks

Key Deliverables:

- Route survey data
- Terrain analysis
- Network planning support

Izki Pipeline Route Survey Project

Project Scope:

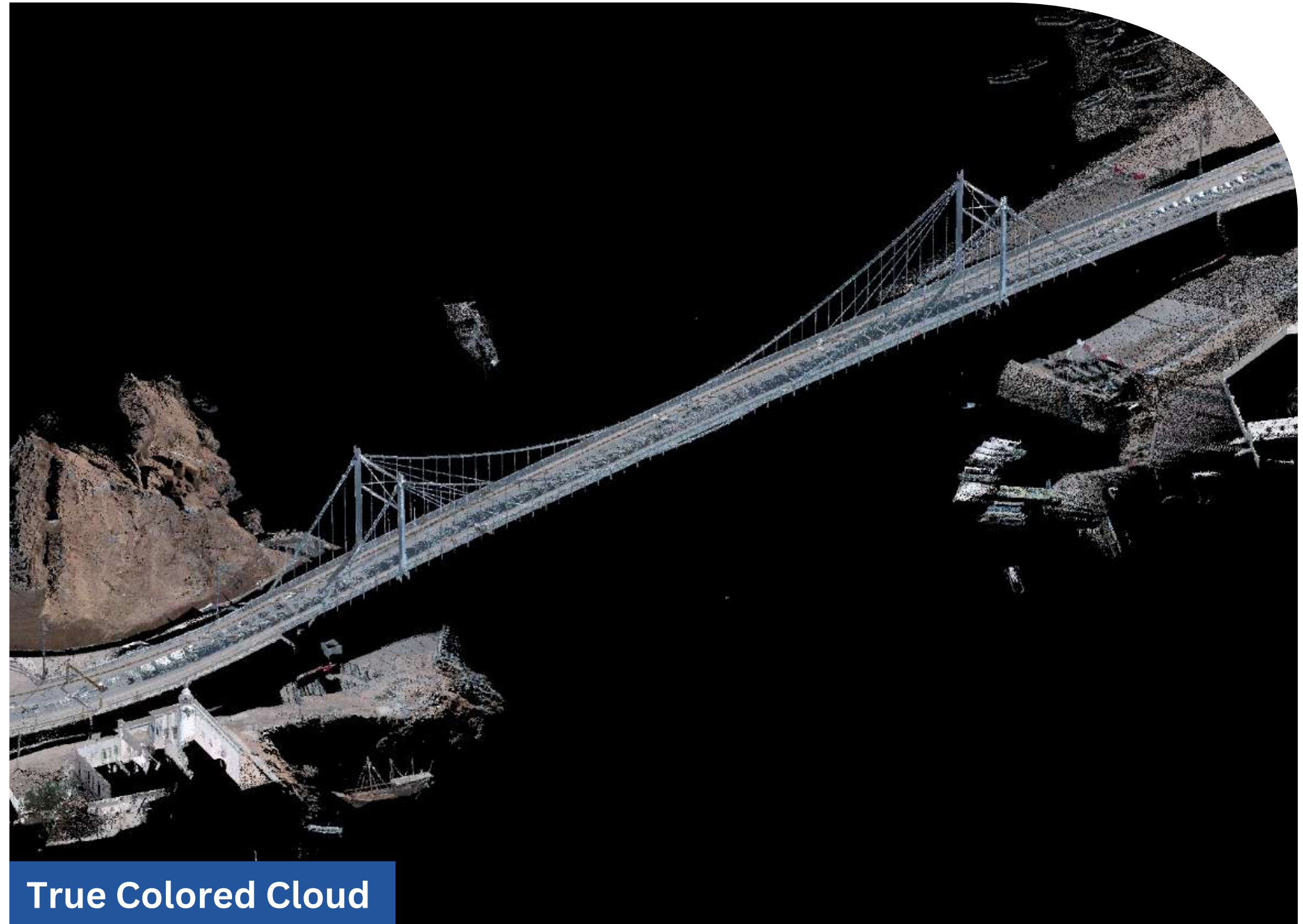
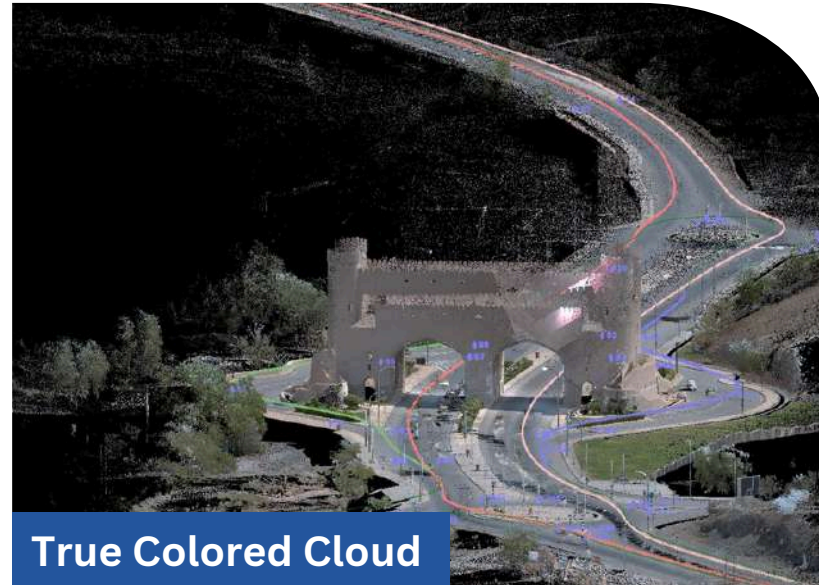
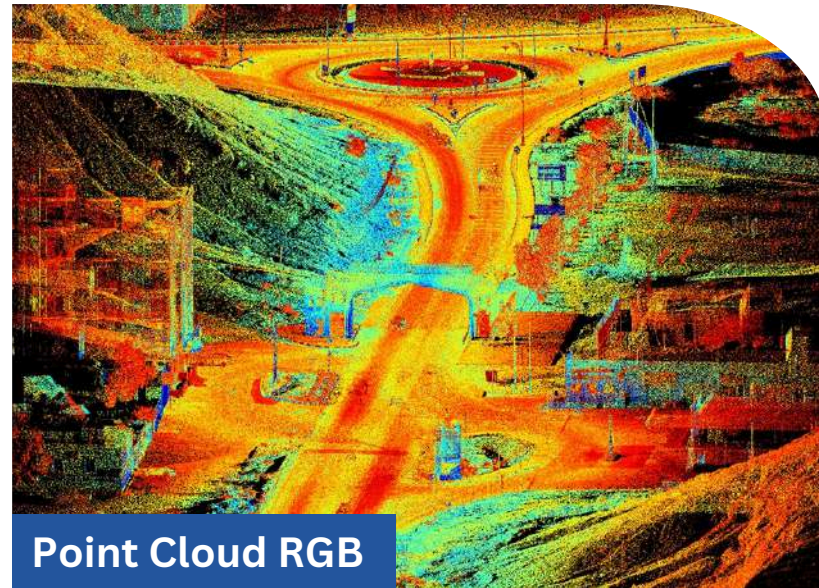
- ↕ 800 km Total Length
- 📍 Location: Izki
- 🌙 Proposed Pipeline Corridor

Key Deliverables:

- Digital Terrain Model
- Pipeline Route Plans
- Longitudinal Profiles



Deliverables:



3D LiDAR Scanning

3D LiDAR Scanner uses laser pulses to create 3D models and maps of objects and environments with high precision.

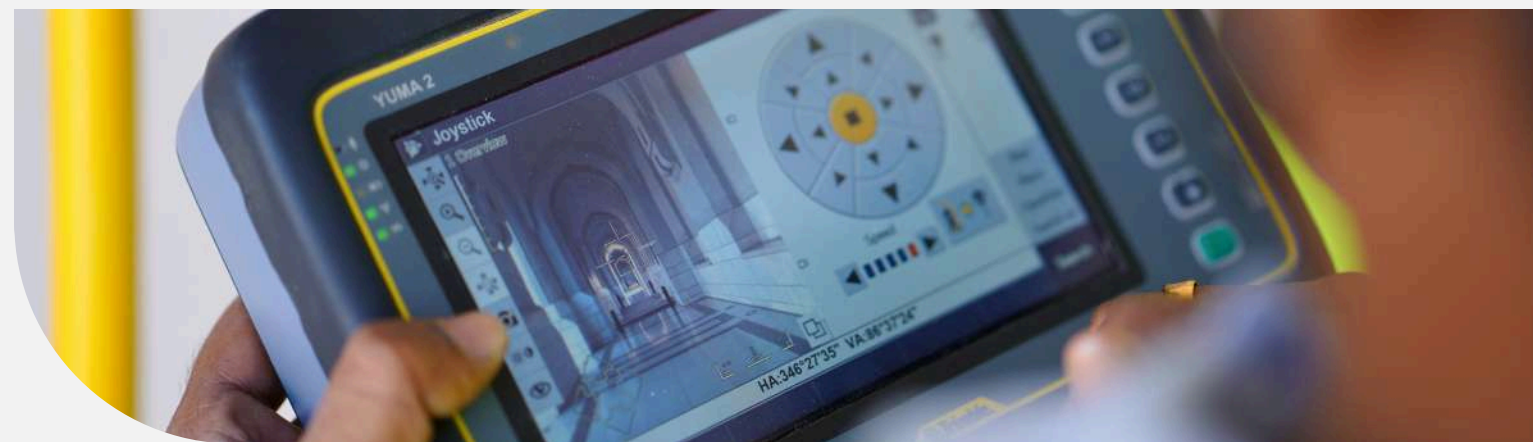
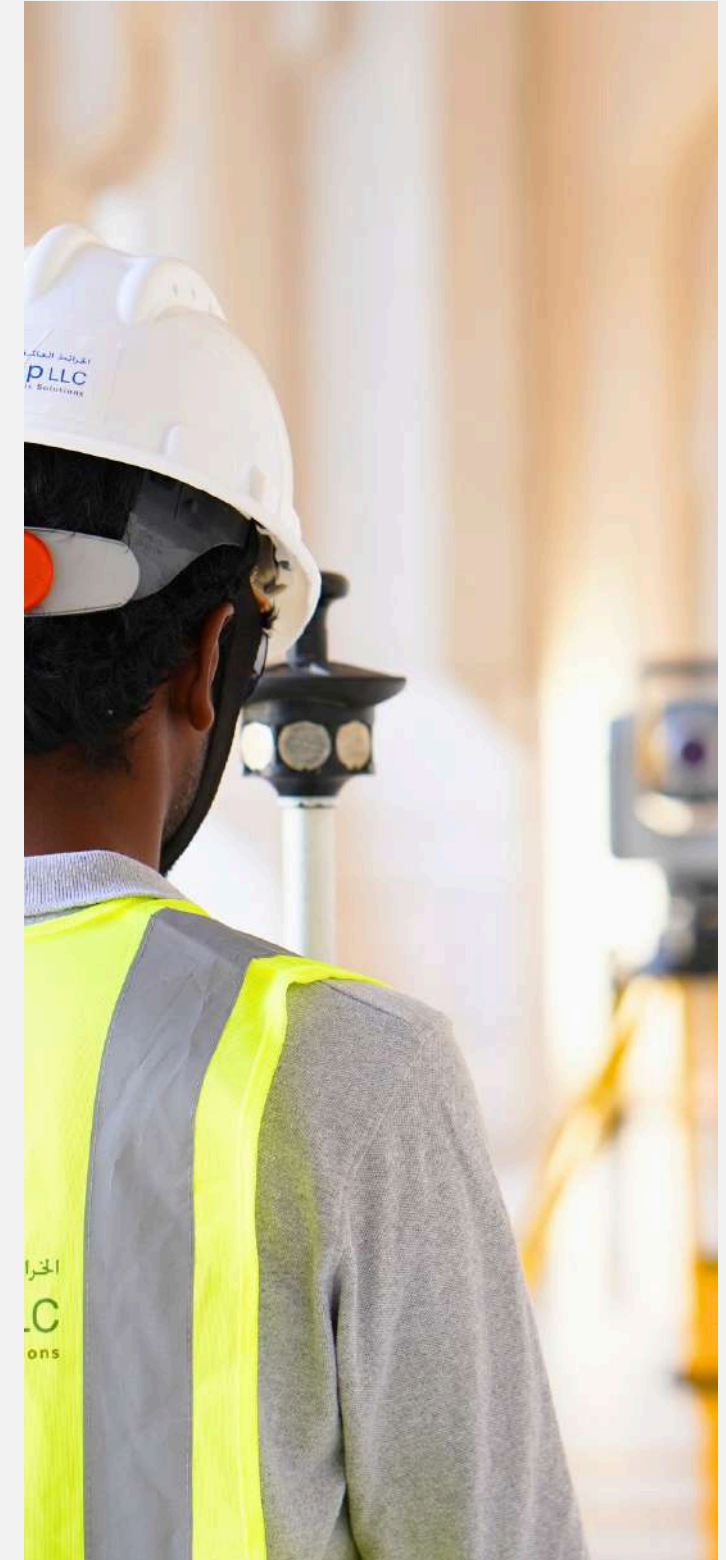
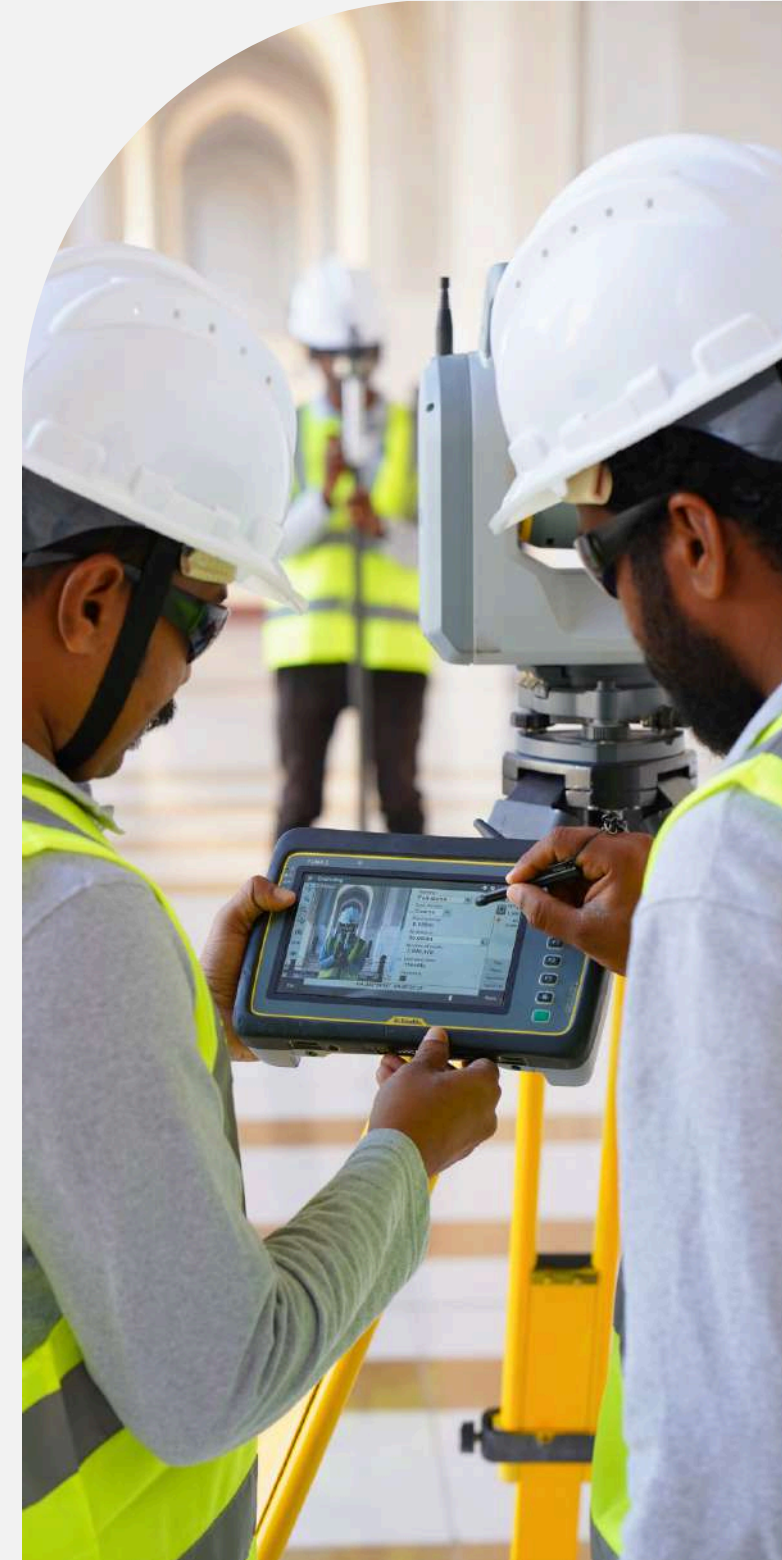
Advantages

- Higher Accuracy up to 6mm
- Minimum human resources
- Weather/Light Independent
- Coverage up to 600m & 360 degree



Model:
Trimble SX10

Model:
Trimble SX10



A few from our **Major 3D Laser Scanning Projects.**

Terrain Mapping Project

Jabal Akhdar

 1.9 Ha Area Coverage

 Terrain Modeling

 Topographic Analysis



2D As-Built Survey

Nizwa Hotel

 Complete 2D As-Built Survey

 Detailed Floor Plans




 Interior Space Mapping



A few from our
Major 3D Laser Scanning Projects.

3D LIDAR Scanning




Bimmah Sinkhole

-  Complete 3D LIDAR Scanning
-  Geological Feature Mapping
-  Precise Dimensional Analysis



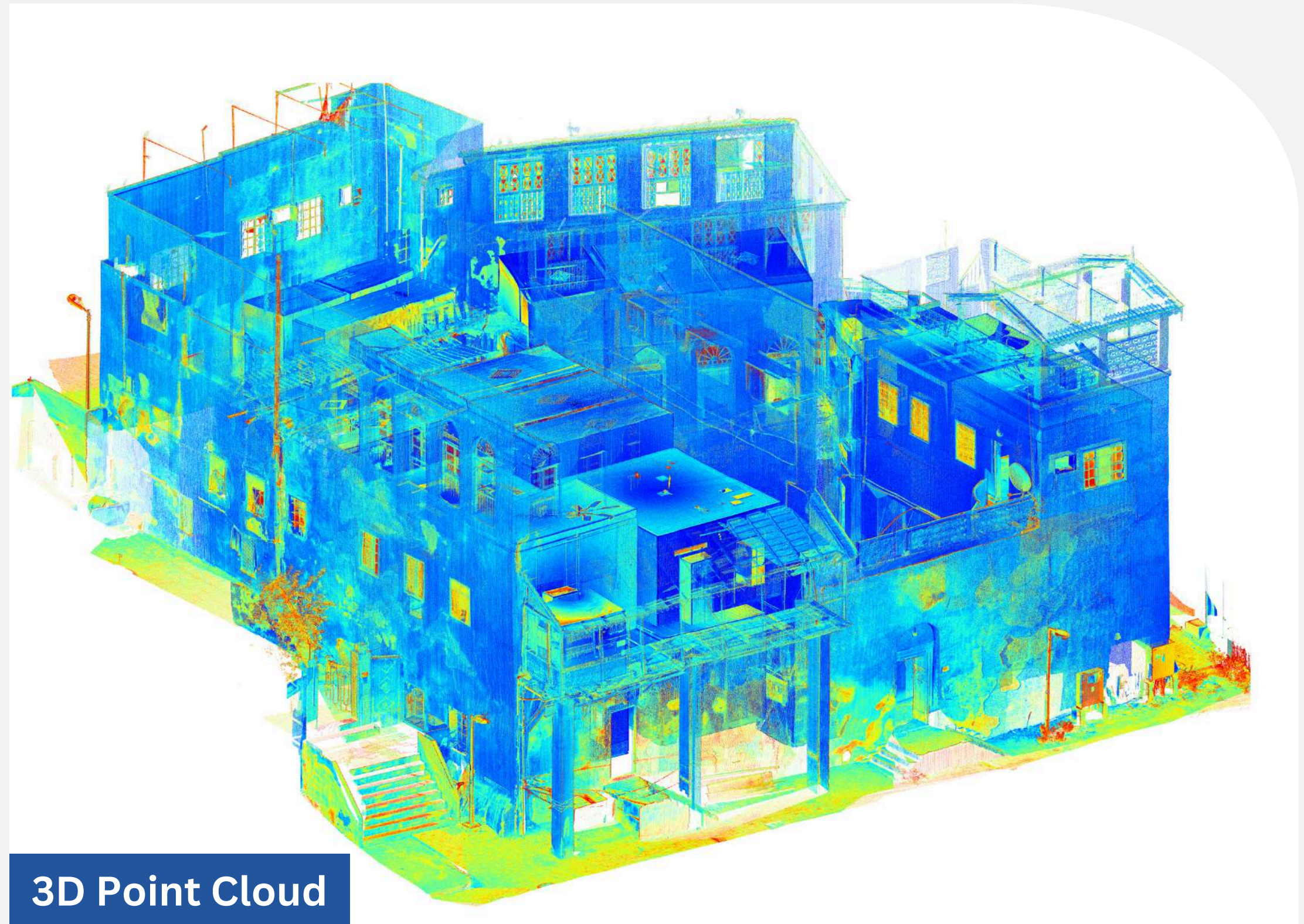
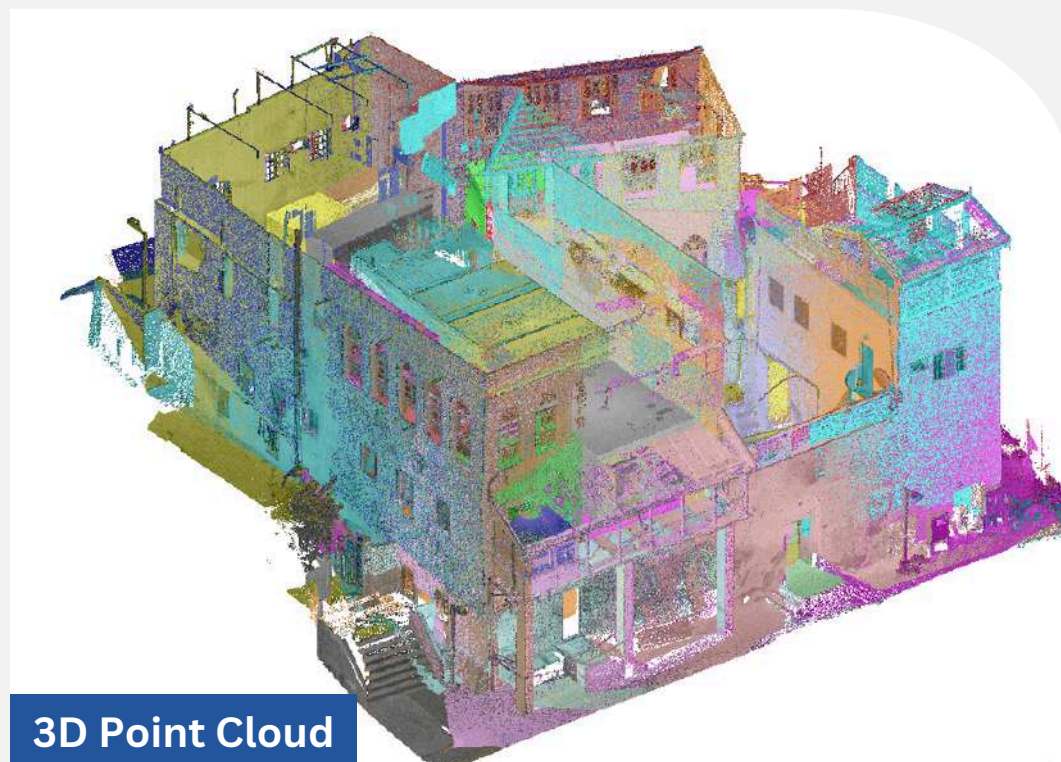
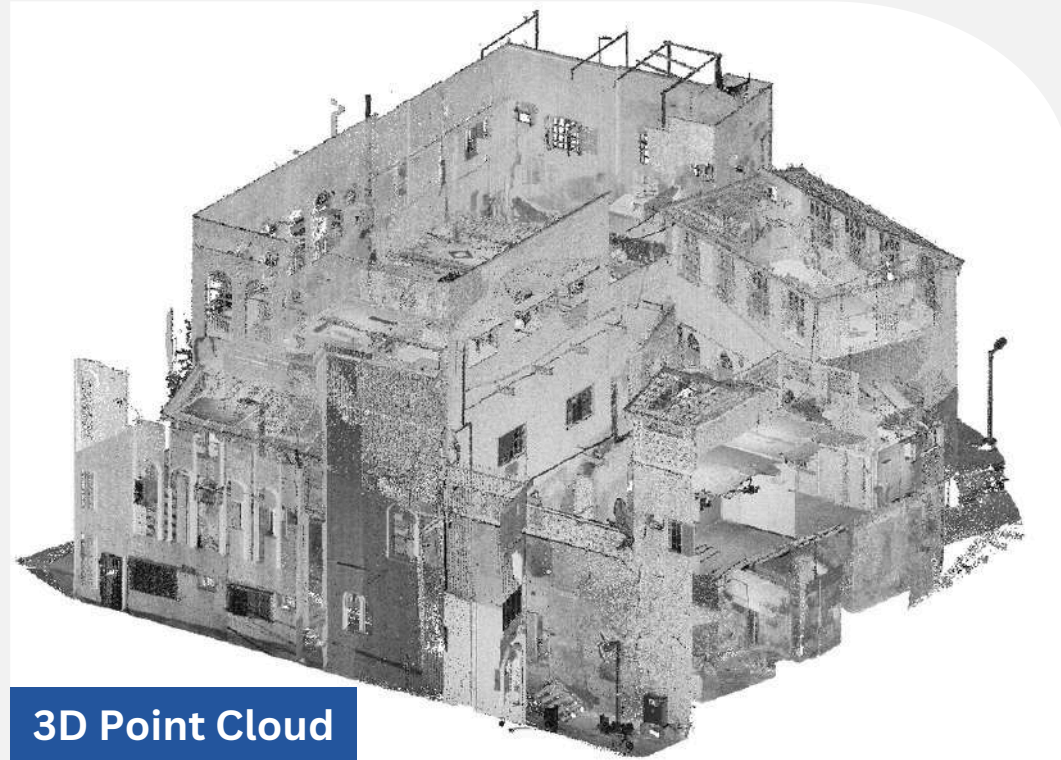
As-Built Survey

Al Bustan Palace

-  Complete As-Built Survey
-  Architectural Detail Capture
-  High-Precision Measurements



Deliverables:

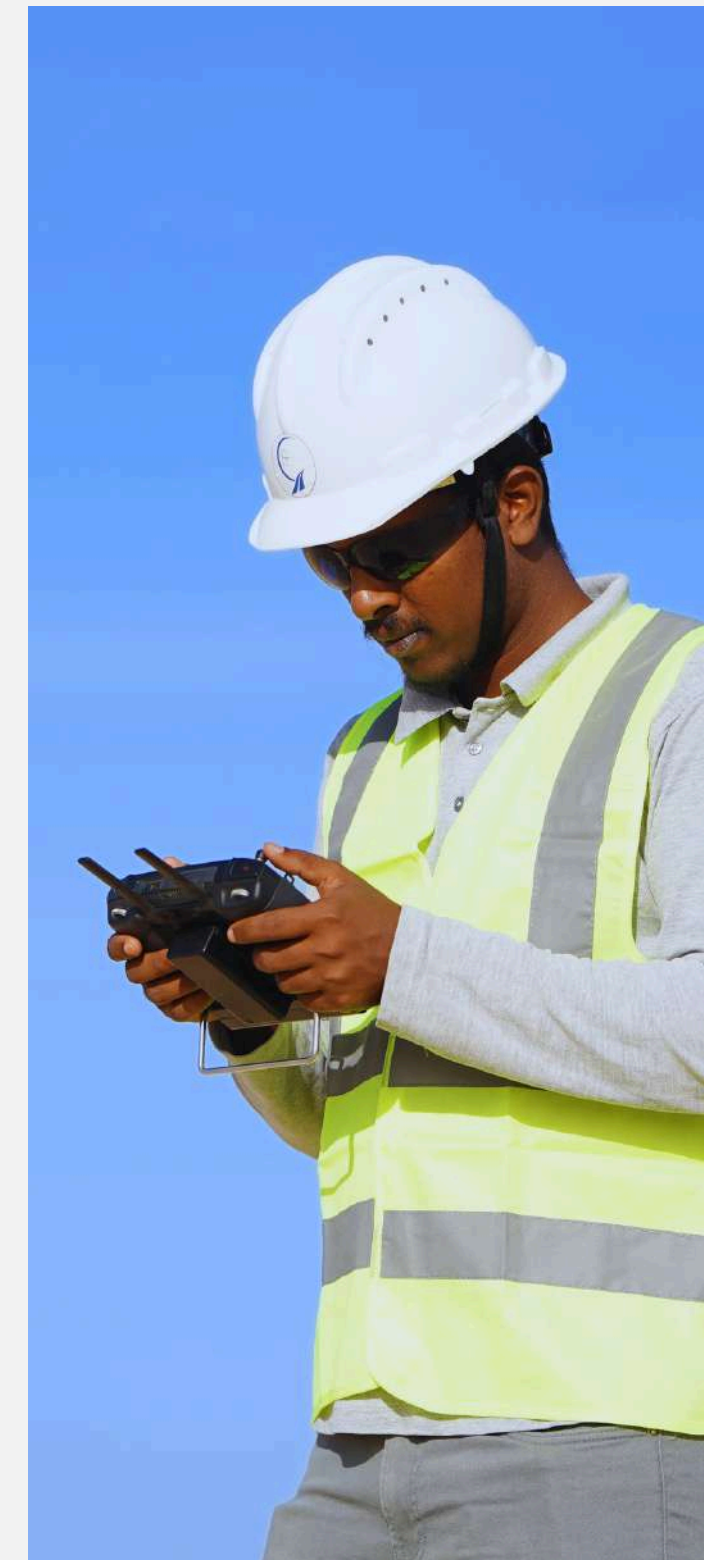


Drone Survey

Our drone survey services provide high-resolution, precise data for diverse surveying needs, even in challenging or expansive locations. We offer flexibility and efficiency for various projects.

It employs the aerial triangulation technique to capture high-quality aerial photographs, seamlessly integrating with RTK GPS. This synergy enables us to generate 3D digital terrain models that boast centimeter-level precision.








A few from our Major Drone Survey Projects




HYDROM2 Project

Topographic Survey-Large-Area Drone Mapping

-  Advanced aerial photogrammetry
-  350 square kilometers
-  Digital Surface Model (DSM), High-resolution orthomosaic




Etihad Rail Corridor Survey

Railway Infrastructure Development

-  152 kilometers
-  Integrated aerial mapping system
-  Digital Surface Model (DSM), High-resolution orthomosaic




UAE-Oman Rail Alignment

Cross-Border Infrastructure Project

-  Rail Station Location Survey
-  11 Ha Additional Area Coverage
-  International Project Coordination

Jindal Shadeed Steel Plant

Industrial Facility Mapping

-  Complete Plant Coverage
-  Duqm Industrial Zone
-  High-Precision Mapping

A few from our **Major Mining Sector Projects**

Aerial Topographic Survey

High-Precision Drone Mapping Project

- Coverage: 1 square kilometer
- Location: Mining lease area in Oman
- Deliverables: High-resolution orthomosaic, digital terrain model
- Application: Mine planning and volume calculations

Topographic Survey

Advanced Aerial Mapping & Terrain Analysis

- Project Scope: Tailing facility & mining cluster mapping
- Coverage Area: 3,930 hectares
- Technology: Advanced drone photogrammetry
- Deliverables: Detailed topographic maps, contour plans



Ground Penetrating Radar (GPR) Survey

Our Ground Penetrating Radar (GPR) is a non-destructive subsurface exploration technology that uses electromagnetic waves to detect and map underground features, utilities, and anomalies across various materials - from soil to concrete - without any surface disruption.

Applications

Underground Utility Survey

Utility Alignment Survey

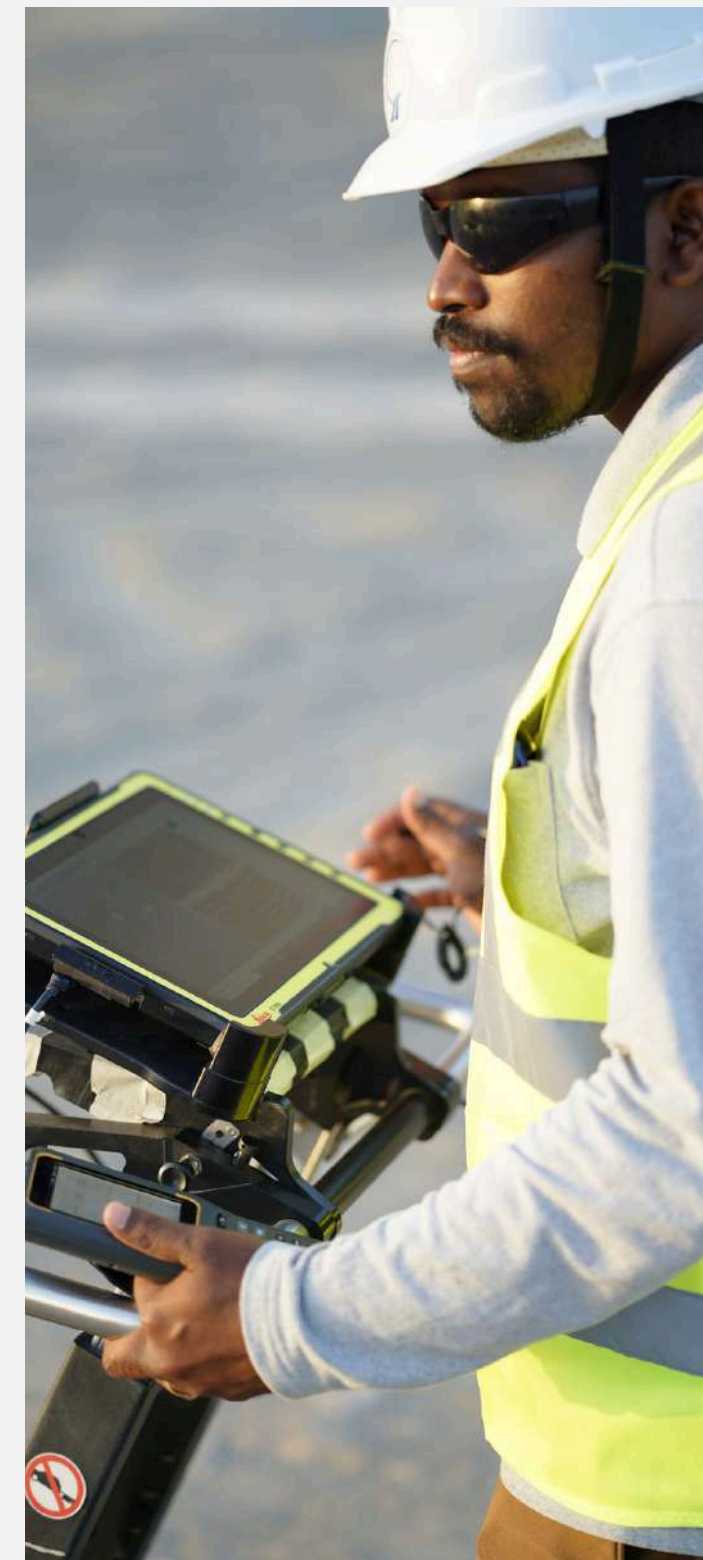
Pavement Inspection

Archeological Investigation Survey

Water Leakage Detection

Void & Cavity Mapping

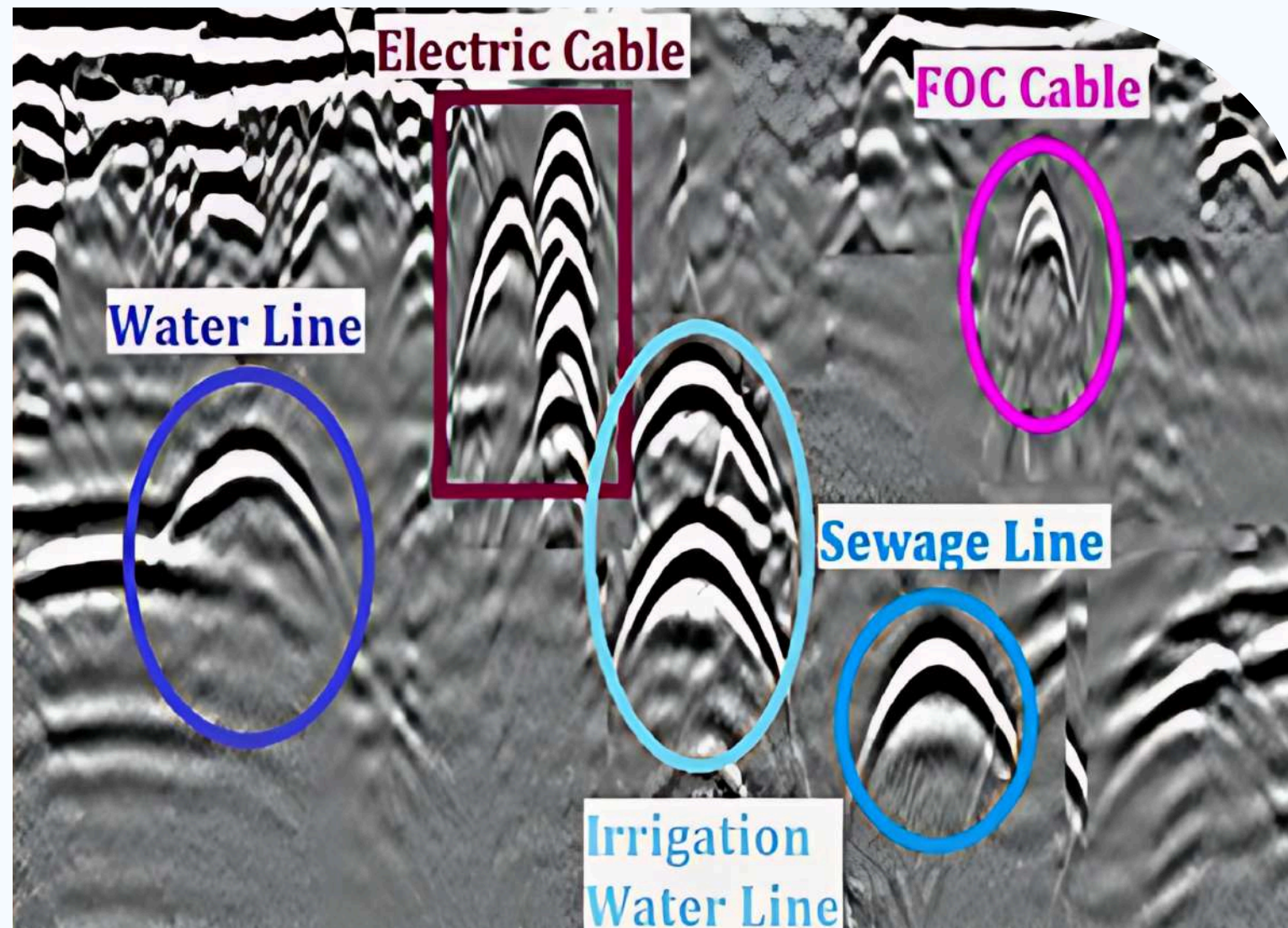




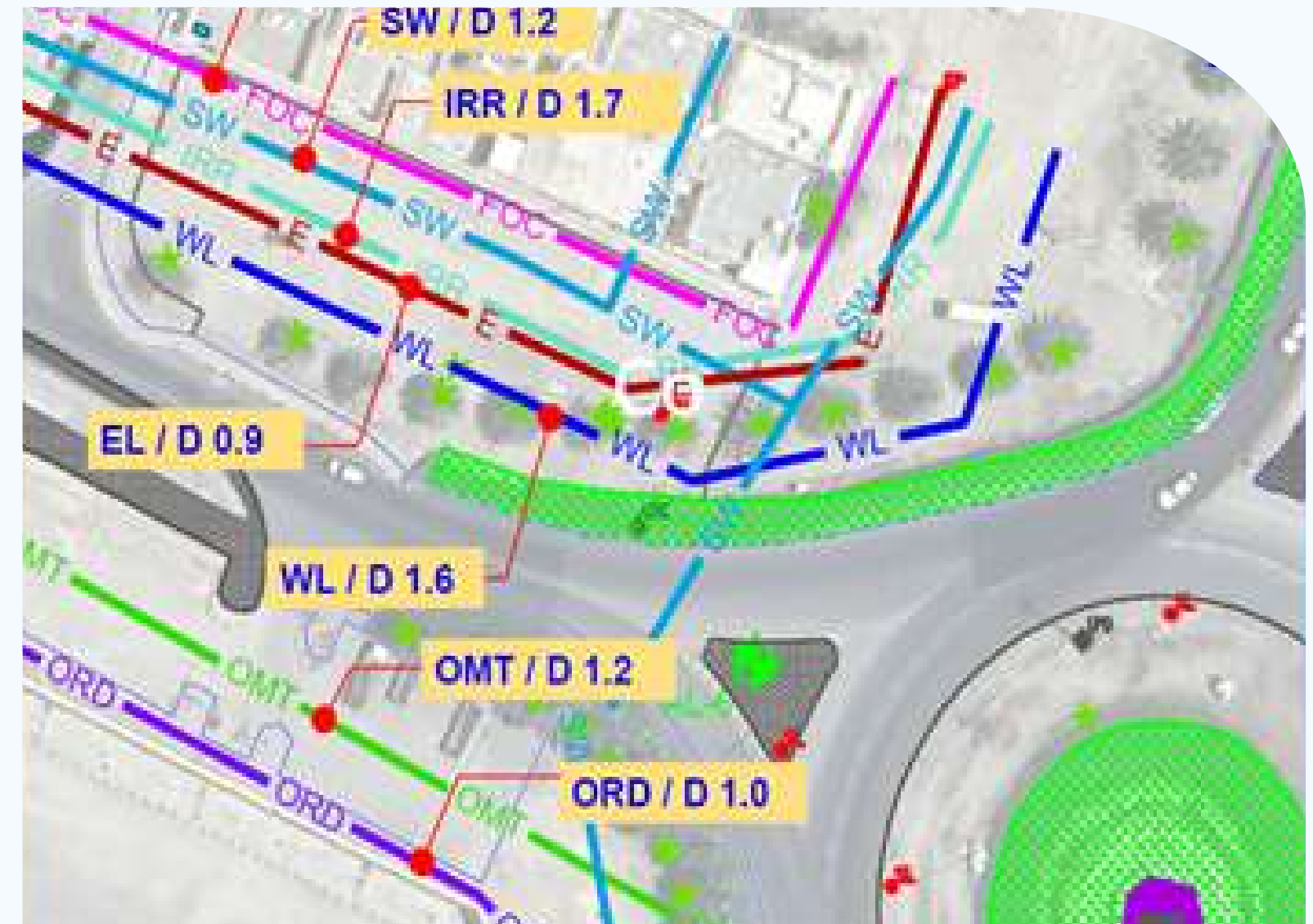
How GPR Works?



Deliverables of GPR Survey:



Radargram



AutoCAD




A few from our Major GPR Survey Projects



SmartCity Infrascan: Al-Khuwair Downtown Waterfront

Urban Development Infrastructure Mapping

Project Scope:

-  586-hectare Coverage Area
-  Wadi System Integration
-  Green-Blue Infrastructure

Survey Components

- Utility Mapping
- Infrastructure Assessment
- Development Planning




Key Deliverables:

- Underground Utility Maps
- Infrastructure Integration Plans
- Development Guidelines

Duqm Dual Carriageway Road Underground Survey

NR-32 Phase-1 Infrastructure Development

Project Scope:

-  Dual Carriageway Design Support
-  NR-32 Phase-1 Coverage
-  Duqm

Survey Focus

- Utility Detection
- Infrastructure Mapping
- Depth Analysis




Key Deliverables

- Underground Utility Maps
- Infrastructure Reports
- Design Recommendations

Subsurface Utility Mapping for HDD Solutions

Infrastructure Development Support

Project Scope:

-  500+ km Pipeline Routes
-  PAS 128 Standards
-  Comprehensive Coverage

Detection Scope

- Underground Structures
- Storage Tanks
- Subsurface Anomalies

Project Benefits

- Cost Optimization
- Timeline Efficiency
- Risk Mitigation

Industrial Refinery Precision Mapping

Oil & Gas Infrastructure Survey

Project Scope:

- Oman LNG (OLNG)
- OQ8 & OQGN
- Petroleum Development Oman

Survey Focus

- Pipeline Mapping
- Electrical Infrastructure
- Communication Lines

Safety Outcomes

- Hazard Prevention
- Environmental Protection
- Safety Compliance



Hydrography Survey Services

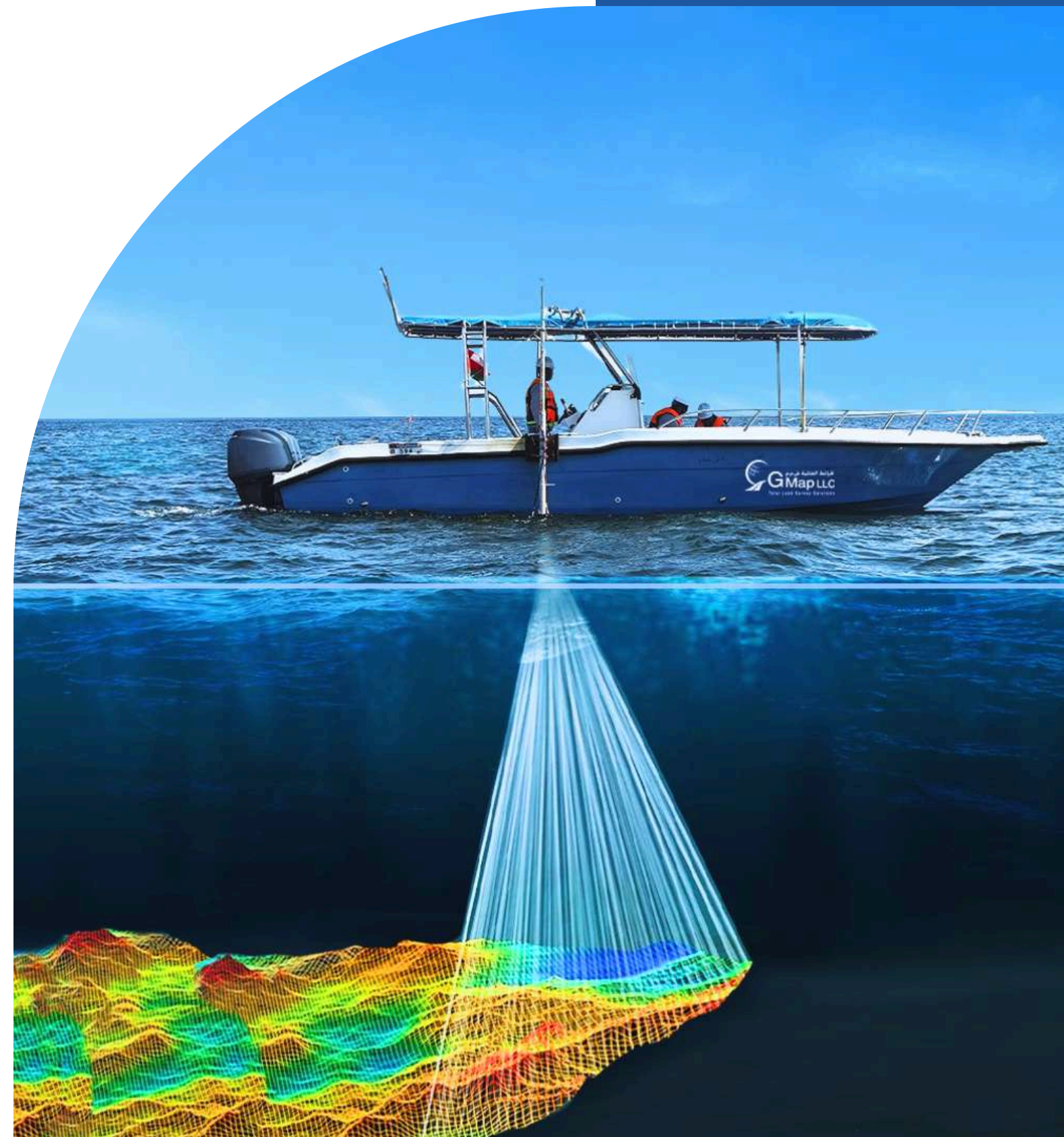
Our offshore survey services provide critical data for safe and efficient offshore operations. We utilize advanced technologies to map the seabed, chart water depths and currents, and assess subsea structures. This ensures successful project planning, risk mitigation, and environmental protection across various industries, including oil & gas, renewable energy, and telecommunications.

Applications

Bathymetry Survey

Metocean Surveys

Marine Geophysical Survey Including Side Scan



Bathymetry Survey

Advanced underwater mapping solutions using cutting-edge sonar technology for precise seabed visualization and marine project planning.

Multibeam Survey

High-resolution seabed mapping using multiple sonar beams, delivering comprehensive underwater terrain visualization for complex marine projects.

Singlebeam Survey

Precise depth profiling using focused sonar technology, ideal for navigation channels and coastal monitoring projects.

Applications:



Seabed Mapping



Marine Construction



Pipeline Projects



Marine Research

Equipment Used:
Teledyne Seabat T20R



Metocean Surveys

Advanced meteorological and oceanographic data collection for maritime operations, providing crucial insights for planning and safety in marine environments.



Applications:



Wave & Current
Monitoring



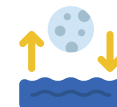
Environment
Monitoring



Weather
Forecasting



Turbidity
Monitoring



Tidal
Measurements

Equipment Used:

Teledyne RDI

Acoustic Doppler Current Profiling







A few from our Major Bathymetry Survey Projects

Musandam Airport Development

Integrated Coastal & Land Survey

Bathymetric

Topographic





-  Coastal Mapping
-  Airport Infrastructure
-  Terrain Analysis
-  Depth Profiling

Grand Blue City

Pre & Post Dredging Survey

Single Beam

Multibeam




-  Pre-Dredge Survey
-  Post-Dredge Survey
-  Dual Technology
-  Progress Monitoring

Marina & Coastal Protection

Comprehensive Marine Survey

Marina

Coastal

-  Marina Infrastructure
-  Bathymetric Mapping
-  Coastal Protection

Geographic Information System (GIS) Mapping

At G MAP, we leverage advanced GIS technologies to deliver critical planning data for a wide range of sectors, from Building Information Modelling (BIM) and Land Use to Transportation and Utilities, among others. We harness the analytical capabilities of GIS for diverse spatial analyses and modelling tasks.

Applications

3D Terrain Visualization

Electric Utility Mapping

Asset Management

Building Information Modelling (BIM)

Land and Property Management Systems



A Few of our Major Clients

وزارة الإسكان
والتخطيط العمراني
Ministry of Housing and Urban Planning



MDO
تنمية معادن عمان
MINERALS DEVELOPMENT OMAN



JINDAL
STEEL & POWER



سيح السرية للهندسة ش.م.م
SEEH AL SARYA
ENGINEERING L.L.C

Petrofac

